

## Company Profile

### Company Profile

GeoVision started in 1998 as a video surveillance system developer, with the aim to become a leading total solution provider at digital surveillance field. Up to date, GV-series digital surveillance systems are selling to over 100 countries under GeoVision brand name. With our advantages in digital surveillance techniques, we are forging ahead to new fields of network DVR, network storage, and even video security service.

### Product Coverage

GeoVision digital surveillance system holds technical edges in networking accessibility, image processing, and hardware enhancements. We have developed sector-specific products with a wide interoperability into various fields including point-of-sales systems, license plate recognition systems, centralized monitoring systems, video servers, and access control-DVR systems.

### Product Roadmap

GeoVision futuristic plan will focus on two new but challenging categories in the security industry, one is network DVR development and the other is video security service.

Network DVR covers an extension of centralized monitoring services of no boundaries, enabling video, audio and data transmission over the Internet to GeoVision's Central Monitoring Station, I/O Central Panel, and 3G handheld devices. A well-designed network storage algorithm will enable a large scale of data storage over the Internet, improving the data storage quality on all GV-systems.

Video Security Service is a revolutionary business model for security centers and home care centers. The GeoVision Security Service utilizes Ethernet transmission techniques, wireless sensor devices and GV-Video Servers to extensively lower operation cost and raise security efficiency. It will open a new market for commercial and residential uses.

## Our Patents and Awards Gallery

### Patents

**Oct. 2001 Taiwan Patent, No. 135537**

Security system activated and deactivated by image variation.

**Nov. 2002 USA Patent, No. 6477314-B1**

Method of recording image data, and computer system capable of recording image data.



## Combo Card

Model	GV - 1120	GV - 1240	GV - 1480
<b>Recording Rate</b>	120 FPS (NTSC) 100 FPS (PAL)	240 FPS (NTSC) 200 FPS (PAL)	480 FPS (NTSC) 400 FPS (PAL)
<b>Display Rate</b>	480 FPS (NTSC), 400 FPS (PAL)		
<b>Video Input(s)</b>	8, 12, 16	8, 16	16
<b>Audio Input(s)</b>	8, 12, 16	8, 16	16
<b>TV Output</b>	RCA Connector x 1		
<b>Input Type</b>	<ul style="list-style-type: none"> <li>• DVI: 1 PCI Slot : DVI x 2 (one for 16 video, one for 16 audio)</li> <li>• D-Type: 2 PCI Slot : DB15 x 2 (for video) ; DB9 x 2 (extension card for audio)</li> </ul>		
<b>Compression Format</b>	Geo MPEG-4, Geo MPEG-4 ASP, Geo H264		
<b>Video Resolution</b>	D1, Half D1, CIF		



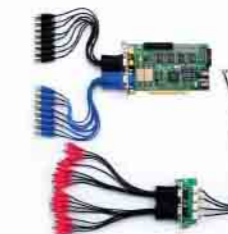
PCI Express D - Type  
212 (W) x 99 (H) mm



PCI D - Type  
170 (W) x 95 (H) mm



PCI DVI - Type  
165 (W) x 95 (H) mm



D-Type





DVI - Type



## Hardware Compression Card





GV-2004	New	
	<b>Recording Rate</b> <b>Display Rate</b> <b>Input Type</b> <b>Video Input(s)</b> <b>Audio Input(s)</b> <b>TV Output</b> <b>Compression Format</b>	D1@120 FPS (NTSC), D1@100 FPS (PAL) 120 FPS (NTSC), 100 FPS (PAL) DB15 (for Video & Audio) 4 Cams 4 Channels RCA Connector x 1 S/W : Geo MPEG4, Geo MPEG4 (ASP) Geo H264 H/W : MPEG-2 / MPEG-4 <b>Video Resolution</b> <b>Dimensions</b>
		D1, Half D1, CIF 195 (W) x 102 (H) mm


GV-2008	New	
	<b>Recording Rate</b> <b>Display Rate</b> <b>Input Type</b> <b>Video Input(s)</b> <b>Audio Input(s)</b> <b>TV Output</b> <b>Compression Format</b>	D1@240 FPS (NTSC), D1@200 FPS (PAL) 240 FPS (NTSC), 200 FPS (PAL) DB15 x 2 (for Video & Audio) 8 Cams 8 Channels RCA Connector x 1 S/W : Geo MPEG4, Geo MPEG4 (ASP) Geo H264 H/W : MPEG-2 / MPEG-4 <b>Video Resolution</b> <b>Dimensions</b>
		D1, Half D1, CIF 240 (W) x 102 (H) mm

## Capture Card



GV-800		
	<b>Recording Rate</b> <b>Display Rate</b> <b>Input Type</b> <b>Video Input(s)</b> <b>Audio Input(s)</b> <b>Compression Format</b>	120 FPS (NTSC), 100 FPS (PAL) 120 FPS (NTSC), 100 FPS (PAL) BNC: BNC X 4 / D-Type: DB15 X 2 4, 8, 12, 16 Cams 4 Channels Geo MPEG-4, Geo MPEG-4 ASP, Geo H264 <b>Video Resolution</b> <b>Dimensions</b>
		D1, Half D1, CIF 175 (W) x 98 (H) mm

GV-650		
	<b>Recording Rate</b> <b>Display Rate</b> <b>Input Type</b> <b>Video Input(s)</b> <b>Audio Input(s)</b> <b>Compression Format</b>	60 FPS (NTSC), 50 FPS (PAL) 60 FPS (NTSC), 50 FPS (PAL) BNC X 4 / D-Type: DB15 X 2 4, 8, 12, 16 Cams 2 Channels Geo MPEG-4, Geo MPEG-4 ASP, Geo H264 <b>Video Resolution</b> <b>Dimensions</b>
		D1, Half D1, CIF 175 (W) x 98 (H) mm

GV-600		
	<b>Recording Rate</b> <b>Display Rate</b> <b>Input Type</b> <b>Video Input(s)</b> <b>Audio Input(s)</b> <b>Compression Format</b>	30 FPS (NTSC), 25 FPS (PAL) 30 FPS (NTSC), 25 FPS (PAL) BNC X 4 / D-Type: DB15 X 2 4, 6, 8, 10, 12, 14, 16 Cams 1 Channel Geo MPEG-4, Geo MPEG-4 ASP, Geo H264 <b>Video Resolution</b> <b>Dimensions</b>
		D1, Half D1, CIF 145 (W) x 97 (H) mm

GV - 250		
	<b>Recording Rate</b> <b>Display Rate</b> <b>Input Type</b> <b>Video Input(s)</b> <b>Audio Input(s)</b> <b>Compression Format</b>	15 FPS (NTSC), 12 FPS (PAL) 15 FPS (NTSC), 12 FPS (PAL) BNC: BNC X 4 / D-Type: DB15 X 2 1, 2, 4, 6, 8, 12, 16 Cams 1 Channel Geo MPEG-4, Geo MPEG-4 ASP, Geo H264 <b>Video Resolution</b> <b>Dimensions</b>
		D1, Half D1, CIF BNC: 120 (W) x 95 (H) mm D-Type: 120 (W) x 87 (H) mm

## Accessory (Card)



### GV-NET CARD



**Introduction**  
RS-232 to PC  
RS-485 (+/-)

**Dimensions**

RS-232 to RS-485 Signal Converter  
RJ-11 to DB9 Female Cable  
Connect to GV-IO/PT-811 RS-485+  
Dome Camera RS-485(+/-)  
88 (W) x 99 (H)mm

### GV-NET / IO CARD



**Introduction**  
RS-232 to PC  
RS-485 (+/-)

**Input**  
**Relay Output**  
**Relay Capacitance**  
**Dimensions**

RS-232 to RS-485 Signal Converter  
RJ-11 to DB9 Female Cable  
Connect to GV-IO/PT-811 RS-485+  
Dome Camera RS-485(+/-)  
4 (Dry Contact / TTL)  
4 (Normal Open)  
2A / 30V DC; 0.25A / (250V) AC  
88 (W) x 99 (H) mm

### GV-IO 12-IN CARD

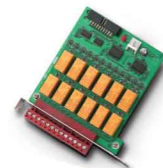


**Introduction**

**Input**  
**Dimensions**

GV-NET I/O CARD with 12 Points  
Digital Output Interface  
12 (Dry Contact / TTL)  
64 (W) x 99 (H) mm

### GV - IO 12-OUT CARD



**Introduction**

**Relay Output**  
**Relay Capacitance**  
**Dimensions**

GV-NET I/O CARD with 12 Points  
Relay Output Interface  
12 (Normal Open)  
2A / 30V DC; 0.25A / 250AC  
107 (W) x 99 (H) mm

## Accessory (Card)



### GV-LOOP THROUGH CARD



**Introduction**

**Interface**  
**Output Interface**

**Input Signal**  
**Dimensions**

Without internal processing, video signals can be taken directly from GV-Series Capture Card and split into 16 channels while maintaining video quality.  
2 x 40-Pin Connector  
2 x 15-Pin D-type  
1 x 40-Pin Connector  
16 Channels  
130 (W) x 98 (H) mm

### GV-MULTI QUAD

New



**Introduction**

**Interface for GV-Video**  
**Capture Card**

**TV Output**

**Input Signal**

**TV Monitor Layout**

**Compatible Model**

**Dimensions**

Design to alert through 5 additional TV screens. One is the main monitors and the other 4 are call monitors.

40-Pin Connector

DB15 to 5 BNC Connectors with 5 RCA video connector

16 Channels

Port 1: 1/4/6/8/10/12/16 screen division with scan and call function  
Port 2 - Port 5:  
Quad display or single channel selection with scan and call function

GV-250, GV-600, GV-650, GV-800, GV-900, GV-1120, GV-1240, GV-1480, GV2004, GV2008  
178 (W) x 104 (H) mm

## Accessory (Box)

### GV-IO



<b>Introduction</b>	Provides 8 digital inputs and 16 digital outputs
<b>RS-485 (+/-) Input</b>	Connect to GV-NET RS-485 (±) 8 (Dry Contact)
<b>Relay Output</b>	16 Connection Points (For 2 x GV-Relay)
<b>Output Circuit</b>	TTL Open Collect
<b>Dimensions</b>	202 (W) x 39 (H) x 166 (D) mm

### GV-RELAY



<b>Introduction</b>	Provides 8 digital relays outputs, controls alarms or PTZ cameras and connects to the control source of GV-I/O output
<b>Relay Output</b>	RL1~RL8
<b>Relay Control Source</b>	+ 5V, D01~D08 Connection Output of GV-I/O
<b>Relay Status</b>	Normal Open
<b>Relay Capacitance</b>	6A / 250V AC; 10A / 125V
<b>Dimensions</b>	202 (W) x 39 (H) x 166 (D) mm

### GV-COM



<b>Introduction</b>	Adds 1 RS-232/ RS-485 serial ports to PC's USB port, suits for instrumentation and POS applications
<b>Dimensions</b>	103 (W) x 32 (H) x 64 (D) mm

### GV-HUB



<b>Introduction</b>	Adds 4 RS-232 / 4 RS-485 serial ports to PC's USB port, suits for instrumentation and POS applications
<b>Dimensions</b>	103 (W) x 309 (H) x 125 (D) mm

### GV-Keyboard



<b>Introduction</b>	Used to program, operate, and control up to 16 GV-Systems through RS-232 DB9 Female, USB1.1, RS-485 (±)
<b>Output</b>	
<b>Dimensions</b>	300 (W) x 45 (H) x 161 (D) mm

### GV-IR Remote Control



<b>Introduction</b>	Controls GV-Systems
<b>Dimensions</b>	53 (W) x 28 (H) x 185 (D) mm

### GV-Joystick

New



<b>Introduction</b>	Used to program, operate and control up to 16 GV-Systems through USB1.1, compatible with USB2.0, or through RJ45 connect to GV-Keyboard.
<b>Control</b>	It has 3 direction control for X-axis move, Y-axis move, Zoom IN/Zoom Out and 4 buttons for function control
<b>Dimensions</b>	115 (W) x 100 (H) x 155 (D) mm

## Accessory (Box)

### GV-DATA CAPTURE V3E



<b>Introduction</b>	The GV-Data Capture V3E is the integration of POS systems and GV-System through Ethernet	
<b>Input</b>	<b>Connector</b>	<b>Function</b>
	DB9 Female DB25 Male/Parallel Port	RS-232 from POS RS-232 from POS/ Parallel Port from POS
<b>Output</b>	DB9 Male DB25 Female/Parallel Port	RS-232 to printer RS-232 to printer / Parallel Port to Printer
	DB9 Female RJ-45	RS-232 to DVR RJ-45 to DVR
	RS-485+	Connector to GV-NET / GV-Hub/GV-Com RS-485+
	RS-485-	Connect to GV-NET / GV-Hub/GV-Com RS-485-
<b>DC IN</b>	Power Adapter DC5V, 2A Inner Positive	
<b>Dimensions</b>	161 (W) x 34 (H) x 123 (D) mm	

### GV-WIEGAND CAPTURE



<b>Introduction</b>	The GV-Wiegand Capture is the integration of Access Control System to GV-System	
<b>Communication</b>	RS-232	DB9 Female Terminal Block
	RS-485	
<b>Input</b>	Input Input Signal	2 12V Voltage input / dry-connect input
	High State	9~12V / close
	Low State	0V / open
<b>Output</b>	Relay	2
	Relay Status	Normal Open
	Relay Capacitance	3A / V AC125V, 1.5A / V AC250V
	Relay ON Time Relay OFF Time	4ms 4ms
<b>Wiegand</b>	Input Connector	12V, D0, D1, GND
	Output Connector	12V, D0, D1, GND
	Format	Wiegand 26 Bits~40 Bits
<b>DC IN</b>	DC 12V, 1A	
<b>Dimensions</b>	120 (W) x 68 (H) x 26 (D) mm	



# GV-Series Digital / Hybrid Surveillance System

GV-Series Surveillance System is designed to process video, audio and data from local and remote networked surveillance environment. It utilizes the most advanced digital video compression and processing technologies to generate superior video quality. GV-Series also provides a hybrid solution of IP surveillance that would be integrated with existing analog cameras through the GV-Video Server. The strong networking capability enables video/audio data to be transferred over the Internet to WebCam, 3G mobile phone, PDA or GeoVision's remote monitoring applications.



## Monitor Viewing

- Geo MPEG-4, Geo MPEG-4 ASP, Geo H264
- Motion detection & Advanced motion detection
- Full screen view
- Object counting / Object tracking
- Unattended & Missing object detection
- Face Detection
- Visual Automation
- Multiple UI Resolution support up to 1920x1200 resolution
- Virtual PTZ & I/O control
- I/O & Alarm management
- Touch screen
- Video mask protection / Privacy mask
- Multi level passwords protection
- Customizes system features (Group function)
- Scene change detection
- Video de-interlace filter
- Synchronized 16 channels of video and audio
- Embedded PTZ control panel
- Supports dynamic IP address
- Swap HDD utility
- Spot monitor
- Latch trigger
- System idle protection
- I/O configuration / Advanced I/O panel
- Selectable interface
- Settings backup and restoration
- Supports 3GPP for 3G mobile
- Digital watermark

## Smart Search & Easy Playback

- Timeline
- Event search
- Quick search
- Object search
- Backup with direct burn
- Multiple format export (EXE, AVI, DVD)
- Full screen view
- Instant playback

## IT Technology

- RSA Network Security
- Authentication Server
- SSL encryption for password protection
- UPnP
- Backup server
- User-definable bandwidth control

## Recording

- Real-time recording
- Recording runs on round-the-clock, motion detection, alarm and schedule
- Address book
- Adjustable recording quality & frame rate
- Pre & post recording
- Alarm triggered recording
- Supports Windows XP / Server 2003 burning software
- HDD Calculator

## Notification

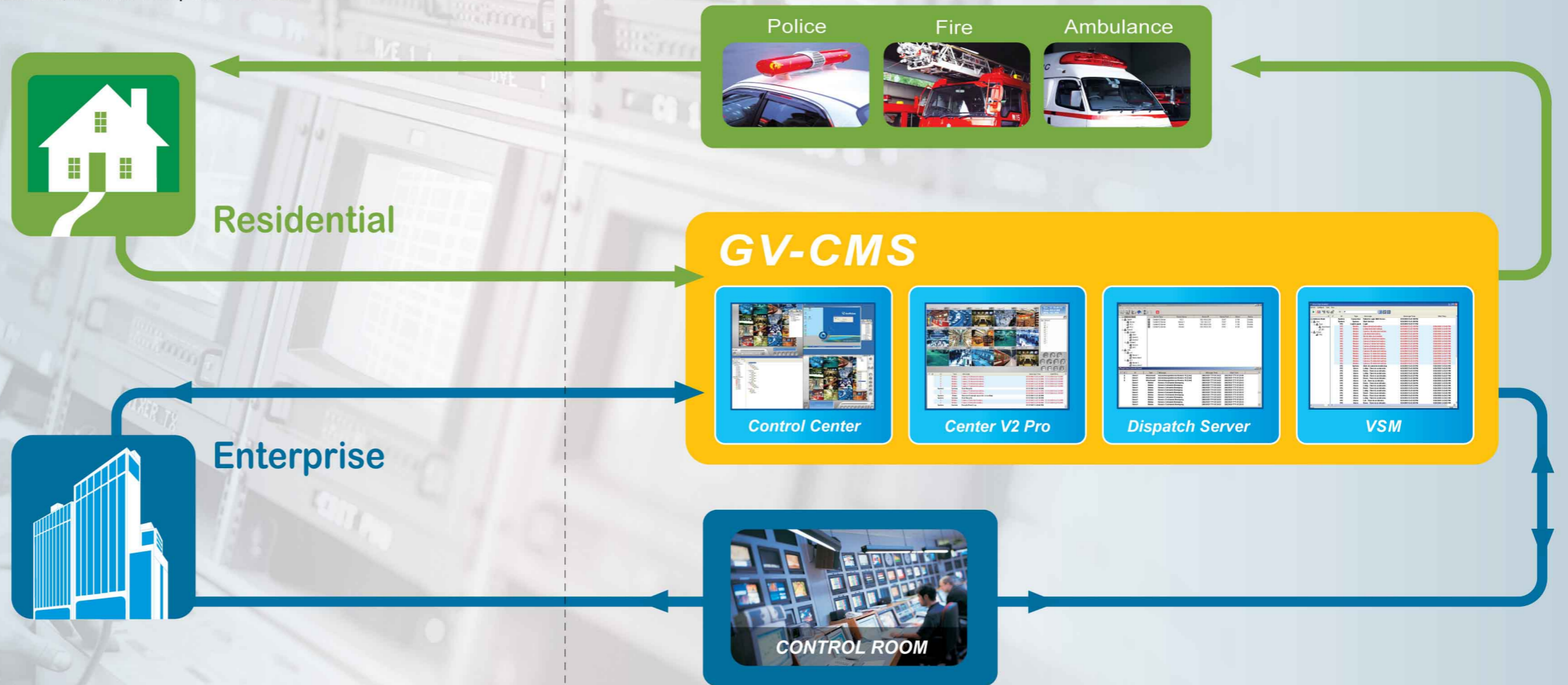
- E-mail or telephone alerts
- Video lost or I/O error alerts
- SMS alerts
- Directs PTZ dome to a preset location

## WebCam & Remote Playback

- Single view & multi view
- User-definable bandwidth control
- Remote control of PTZ domes and I/O devices
- Two-way audio communication
- Remote access to video and audio files
- UPnP compatible
- 32 channels of simultaneous remote playback
- Address book
- Video archive by Date/Time/Cameras
- Advanced search function
- Daylight saving function
- Visual I/O
- Support mobile streaming
- Support GV-Video Server on MultiView
- Support wide screen resolution
- Visual automation for I/O application

# GV-CMS

The GeoVision Central Monitoring Station program provides an overall central monitoring solution for high-profile security areas in commercial, industrial and residential use markets. The Center V2 Pro, VSM, Dispatch Server, and Control Center modules combined with the GV-System create an extremely powerful and cost effective Central Monitoring Station. These modules efficiently manage multiple GV-System subscribers, receive a record video images for evidence, reduce false alarms, instantly output alarms to alert authorities, and maintain full event list for retrievals, all from one point of control.



## Control Center

- Remote DVR
- Remote Desktop
- Remote Viewlog
- Matrix (Remote Live View of 256 cameras)
- I/O Central Panel (Remote I/O configuration)
- Idle password duration setup
- Daylight saving function
- Visual I/O
- Support wide screen resolution
- Support PTZ control on matrix
- Support POS live view on matrix
- Update all host information at once
- Group function
- File transfer through remote desktop FTP
- Narrowband transmission supported by remote desktop

## Center V2 Pro

- Experience 5 subscribers version for FREE.
- Increase up to 500 subscribers with the Professional version
- Receive Real-time Videos & Events Notification from subscriber (DVRs)
- Events are sorted into 21 notification types
- Remote control I/O status (Activation/Trigger)
- SMS, Email Notification
- Subscriber's activities report for analysis
- Idle password duration setup
- Daylight saving function
- Visual I/O
- Support GV-Video Server
- Support wide screen resolution
- Import & export address book
- Support 2 backup servers

## Dispatch Server

- Distribute Network Load between Center V2
- Supports up to 25,000 Subscribers
- Streamlines Networking Processes
- Idle password duration setup
- Daylight saving function
- Visual I/O
- Support GV-Video Server integrated with Center V2
- Import and export the filter settings of event log

## Vital Sign Monitor (VSM)

- Servers up to 1,000 Subscribers
- Receive Real-time Events Notification from subscriber (DVR)
- Events are sorted into 21 notification types.
- Remote control I/O status (Activation/Trigger)
- SMS, Email Notification
- Subscriber's activities report for analysis
- Idle password duration setup
- Daylight saving function
- Visual I/O
- Support GV-Video Server
- Subscriber business card
- Import & export the filter settings of event log
- Support 2 backup servers

# GV-System

## GV-System



<b>GV-2016S</b>	16 Cams	1600GB / 2000GB / 3000GB
<b>GV-2008S</b>	8 Cams	1200GB / 1600GB / 2000GB
<b>GV-1480S</b>	16 Cams	900GB / 1200GB / 1600GB
<b>GV-1240S</b>	8 / 16 Cams	600GB / 1200GB / 1600GB
<b>GV-1120S</b>	16 Cams	300GB / 600GB / 1200GB

Operates on Windows XP Embedded System

Dimensions (W x H x D) 483 x 178 x 528 (mm)

## GV-System (Hot-Swap)



<b>GV-2016S</b>	16 Cams	4 Bays / 6 Bays / 8 Bays
<b>GV-2008S</b>	8 Cams	4 Bays / 6 Bays / 8 Bays
<b>GV-1480H</b>	16 Cams	4 Bays / 6 Bays / 8 Bays
<b>GV-1240H</b>	8 / 16 Cams	4 Bays / 6 Bays / 8 Bays
<b>GV-1120H</b>	16 Cams	4 Bays / 6 Bays / 8 Bays

- Maximum Storage Capacity of more than 4 TB
- Operates on Windows XP Embedded System

Dimensions (W x H x D) 483 x 178 x 528 (mm)

## GV-Mini DVR System

New



<b>GV-1240M</b>	8 / 16 Cams	<b>GV-2008M</b>	8 Cams
<b>GV-1120M</b>	16 Cams	<b>GV-2004M</b>	4 Cams
<b>GV-800M</b>	4 Cams	<b>GV-1480M</b>	16 Cams

- Built-in 1 Bay Hotswappable
- Operates on Windows XP Embedded System

Dimensions (W x H x D) 395 x 100 x 300 (mm)

## GV-Subsystem (8 bay)

New



- RAID 0 / 1 / 5 / 6
- Web UI Administration Center
- Dual iSCSI port via GbE
- No Limitation in number of Subsystems
- Built-in Redundant Power Supply

Dimensions (W x H x D) 483 x 178 x 528 (mm)

## GV-Video Server

New



<b>GV-VS01</b>	One A/V Channel	Dual stream, Adjustable Bandwidth Control
<b>GV-VS02</b>	Two A/V Channels	Supports 3GPP & PTZ Domes and Cameras
		External Storage
		Wireless supports 802.11 b/g

Dimensions (W x H x D) 174.6 x 46 x 127.5 (mm)

## GV-Standalone DVR

New



- Dual stream, Adjustable Bandwidth Control
- Supports 3GPP & PTZ Domes and Cameras
- External Storage
- Wireless supports 802.11 b/g

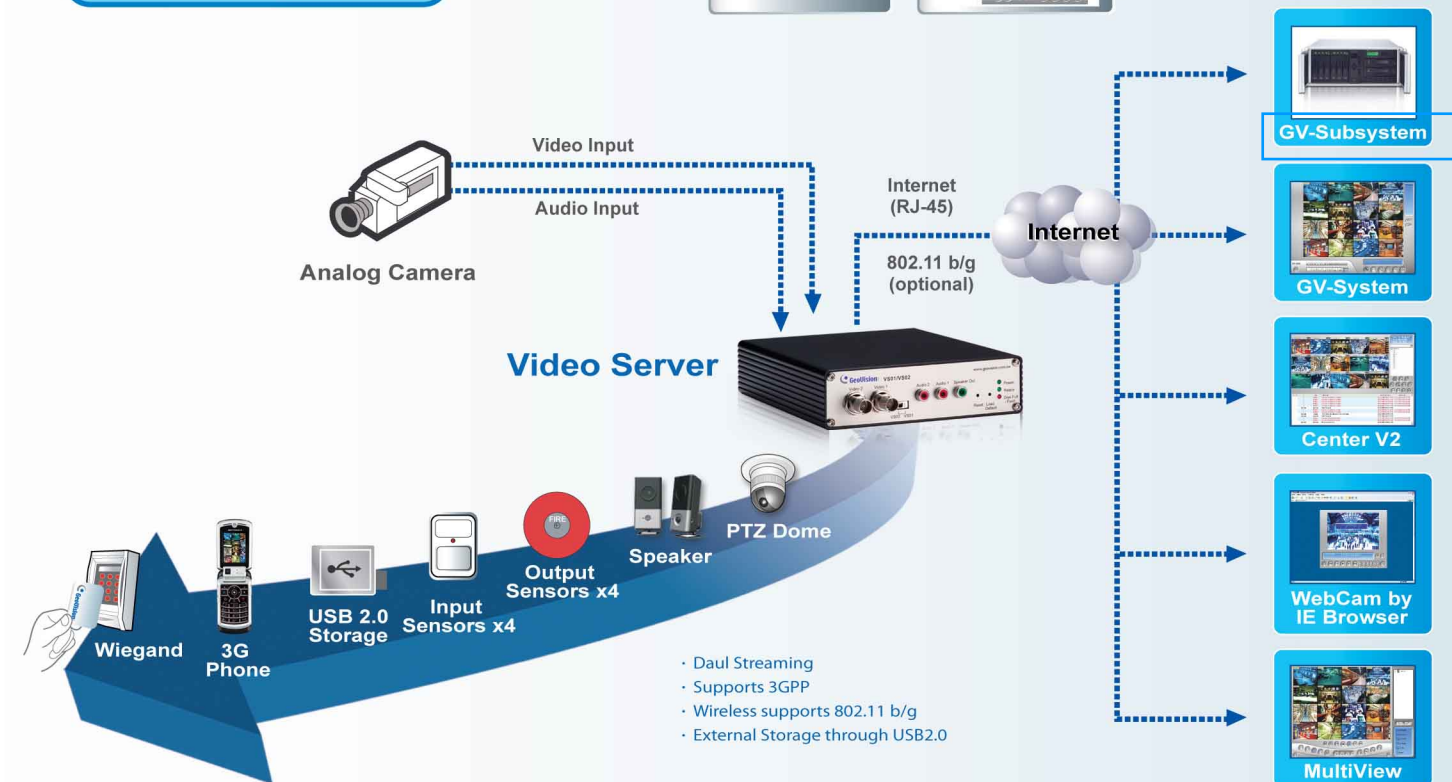
Dimensions (W x H x D) 430 x 80 x 320 (mm)

# GV-Video Server



GV-Video Servers is a simple video converter for existing analog CCTV system into advanced IP surveillance system. Each video server digitizes one or two analog video signals and compresses them into MPEG4 ASP and sends these crisp clear full D1 streams using small bandwidth over an IP network. These streams will be captured, analyzed and processed by GV-Multicam and distributed to a centralized security center like GV-Center V2 with VSM. Thanks to built-in DUAL Streaming Engine you can remotely access on the road at anytime and anywhere using a 3G/UMTS Mobile Phone and save the video streams simultaneously to a DVR.

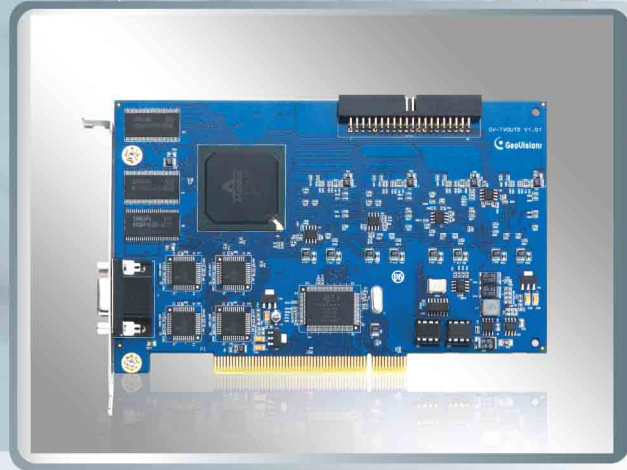
## Connection Diagram



## Applications

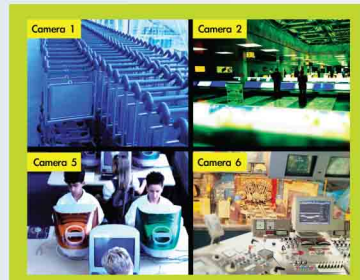
- Home
- Retail
- Enterprise
- Industry
- Utility
- Stadium
- Education
- Healthcare

## GV-Multi Quad Solution



GV-Multi Quad is designed to alert security personal visually through 5 additional TV screens. The primary screen also known as Main Monitor can be configured into Single or up to 16 Screen Division. The secondary screen(s) also known as Call monitor (up to four TVs) display in Single or Quad division. These Call monitors are mainly used for Visual Alert upon Motion Detection or Digital I/O trigger and switch to Full Screen of the happening scene immediately.

### Connection Diagram



Call Monitor 1



Call Monitor 3



Main Monitor

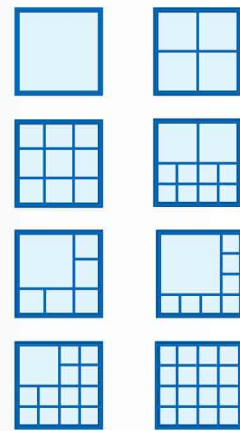


Call Monitor 2



Call Monitor 4

\* Main Monitor  
8 Display style



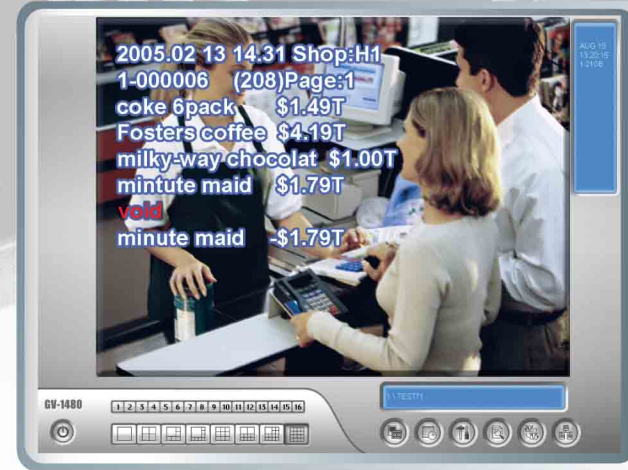
\* Call Monitor  
2 Display style



#### Applications

- Central Monitoring Station
- Traffic Control
- Tunnel
- Casio
- Shopping Mall
- Border Control
- Resort
- Stadium

## GV-POS DVR Integration Solution

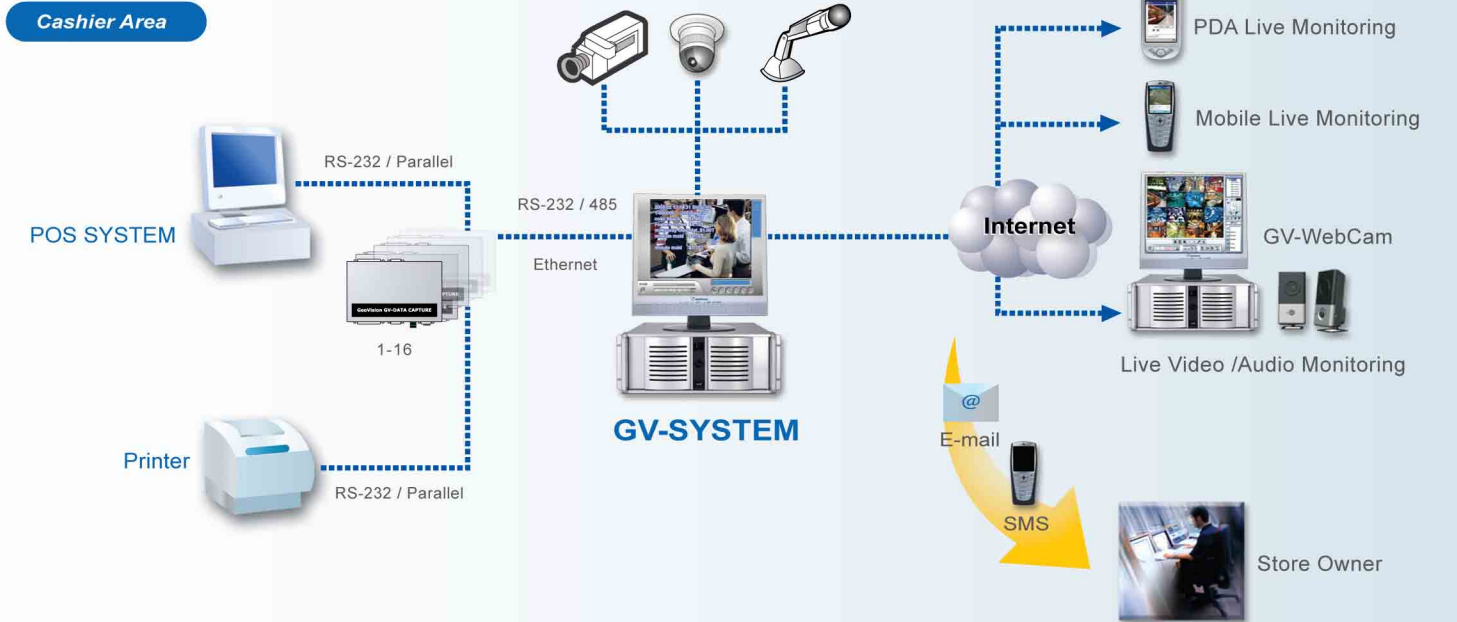


GV POS-DVR solution provides a number of video monitoring solutions with visual contextual awareness that can help business owners protect their business as well as reduce shrinkage. In addition to cash registers and POS systems, GV POS-DVR system provides a flexibility to integrate with many machines or equipments that provide context information.

### Connection Diagram



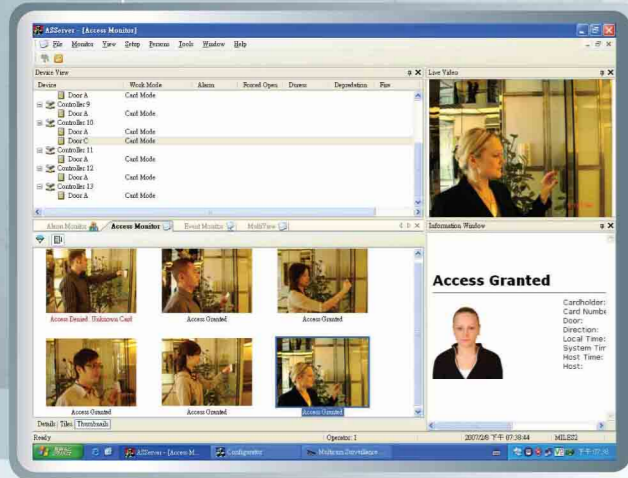
#### Cashier Area



#### Applications

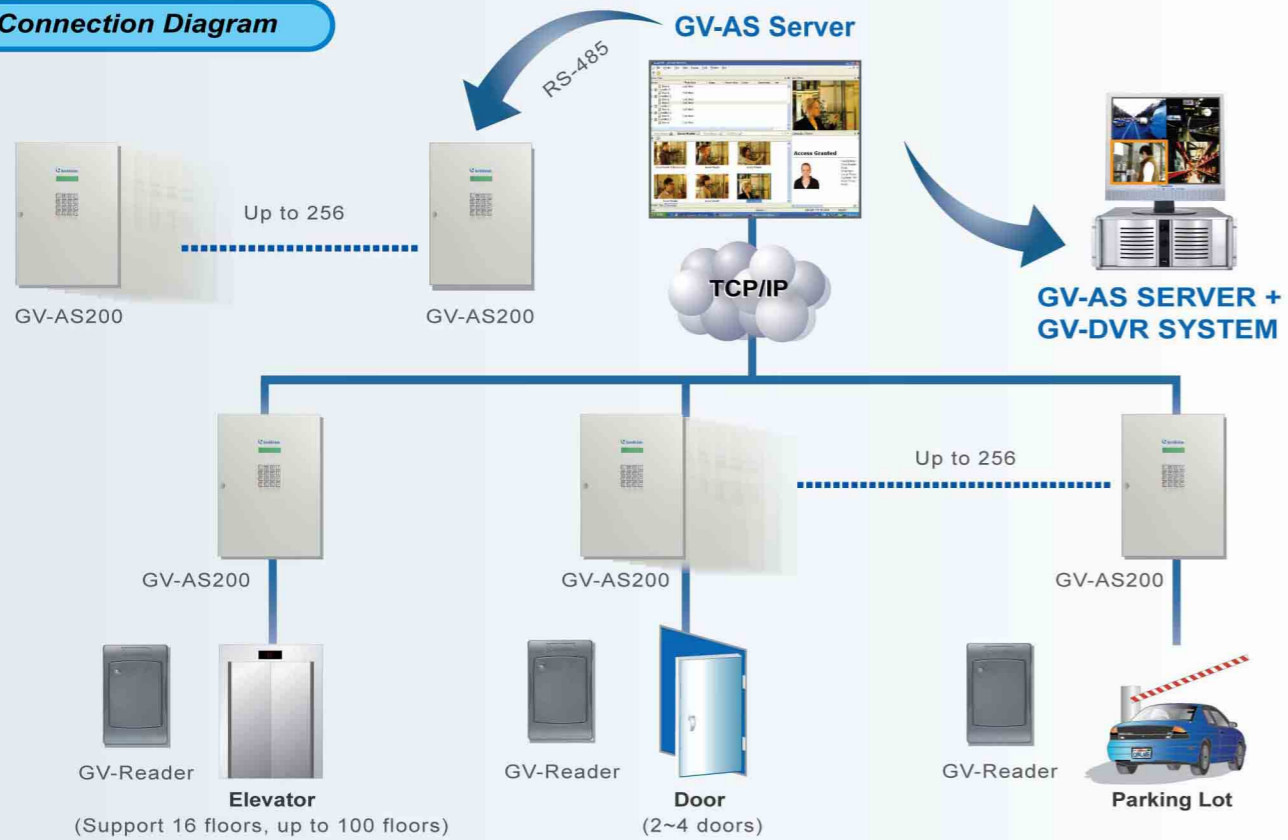
- Convenience Stores
- Retail Stores
- Restaurants
- Gas Stations
- Grocery Stores
- Parking Lot Toll Booths
- Banks
- Kiosks

# GV-Access Control Solution



GeoVision Access Control System combined by GV-AS200 controller, GV-Reader and GV-AS Server. GV-AS200 is a controller, features an up to 4 doors powerful access control and maximum security management solutions. GV-AS Server is a software that integrated digital video monitoring, web-based management tools and central station reporting in one system. Video clips can be recalled through the software, based on time, alarm or event.

## Connection Diagram



### Applications

- Parking lot management
- Elevator
- Enterprise entrance management
- Shopping mall
- Hotel
- Resort
- Entertainment

# GV-LPR License Plate Recognition



GV-LPR is a digital license plate recognition system that utilizes Neural Network Technology of artificial intelligence to identify vehicle license plates. It comprises a video capture card to acquire images, a software-based engine to recognize characters, a set of I/O modules to integrate with alarm and sensors, and a database to store images for event retrieval or analysis. 1, 2, 4, 6 and 8-lane real-time recognition are available.

## Connection Diagram



### Applications

- Parking lot management
- Enterprise entrance management
- Automatic toll collection enforcement
- Traffic enforcement statistics
- Border surveillance
- Stolen vehicle search