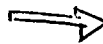



















2. Network ports used in the remote applications:

	<p>WebCam</p> <p><i>SEE PAGE 197 (PDF PAGE 210)</i></p>	<p>Http = 80 FTP = 21 Command = 4550 Data = 5550 Audio = 6550 Remote Control = 3389 SSL = 443 Mobile = 8866 Mobile RPB = 5511 3G RTSP / TCP = 8554 3G RTP /RTCP UPP = 17300-17380</p>
	<p>RemotePlayBack</p>	<p>RPBSvr = 5066</p>
	<p>RemoteView</p>	<p>TCPSvr = 3550</p>
	<p>VSM</p>	<p>Server = 5610</p>
	<p>TwinServer</p>	<p>Server = 9650 Multicast = 19650</p>
	<p>TwinDVR</p>	<p>Http = 80 FTP = 21 Command = 4550 Data = 5550 Remote Control = 3389</p>
	<p>IP Multicast</p>	<p>DMMCast = 3650</p>
	<p>Authentication Server</p>	<p>Server = 3663</p>
	<p>SMS</p>	<p>Server = 6886</p>
	<p>CenterV2</p>	<p>Center = 5547 Command = 5548 Connection Port = 5545 Data = 5549 Audio = 5546 Connection = 5545</p>
	<p>Dispatch Server</p>	<p>Server = 21112</p>
	<p>GeoCenter</p>	<p>Server = 20001</p>
	<p>DMIP</p>	<p>FTP = 21</p>
	<p>DDNS <i>SEE PAGE 338 (PDF 351)</i></p>	<p>Server = 80 and 81</p>
	<p>Control Center</p>	<p>Command Port = 3388 Data Port = 5611 Log Port = 5552</p>
	<p>TCP Server</p>	<p>Server = 3550</p>
	<p>UPnP</p>	<p>TCP/IP = 5200</p>
	<p>Wiegand Capture Server</p>	<p>Server = 5612</p>

Fast Key Reference

This option lets you view the fast key windows of Main System and PTZ Control, giving you an instant reference. Click the **Configure** button, point to **Tool Kit**, and then select **Fast Key List** to display the fast key table of Main System. Click **Close** to display the table of PTZ Control.

Main System

Esc	F1	F2	F3	F4	F5	F6	F7	F8	F9	F10	F11	F12	Print	Scroll	Pause	
~	1	2	3	4	5	6	7	8	9	0	- =	←Back	Insert	Home	Page Up	
Tab	Q	W	E	R	T	Y	U	I	O	P	[]		Delete	End	Page Down	
Caps	A	S	D	F	G	H	J	K	L	; "	Enter				Num / * -	
Shift	Z	X	C	V	B	N	M	<	>	?	Shift \		↑		7 8 9 +	
Ctrl	Alt	Space Bar						Alt		Ctrl		←	↓	→		4 5 6
																1 2 3 Enter
																0 -

Key	Function
Esc	Return to the default screen
Num 1-9, 0 and F1-F6 or Alt+"01"~Alt+"16"	Switch the camera channel
F7	Start/Stop monitoring
F8	Start/Stop monitoring schedules
→ F9	Open the System Configure Setup dialog box
→ F10	Open ViewLog
F11	Start/Stop the camera scan function
F12	Enable/Disable all network connections
A, a	Display the version information
R, r	Restart by Last Settings
Ctrl+R	Restart by Startup Settings
M, m	Start/Stop modem connection
T, t	Start/Stop TCP/IP connection
W, w	Start/Stop WebCam connection
I, i	Start/Stop IP Multicast connection
V, v	Start/Stop connection to Center V2
S, s	Start/Stop TwinServer
G, g	Start/Stop connection to VSM
C, c	Start/Stop CMS Server
→ F, f	Start/Stop full screen view
L, l	Login/Change the user
O, o	Logout from the current user
Q, q	Switch the screen division
Ctrl+Q,W,E,A,S,D,Z,X	Switch to a specific screen division
Z, z	Minimize the Main System window
X, x	Exit the Main System
K, k	Display the Fast Key Reference table
Page Up	Switch to the previous screen
Page Down	Switch to the next screen
Ctrl+Num 1-9, 0 and F1~F6	Take a snapshot
+, -	Zoom in/out the single camera view

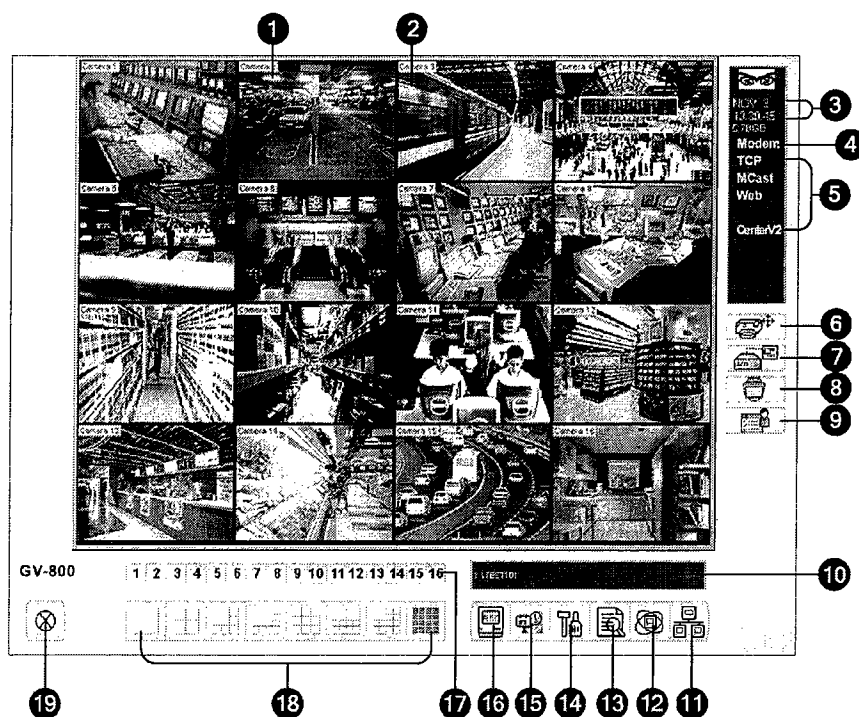


Figure 1-2

The controls in the main screen:

No.	Name	Description
1	Camera Number	Indicates the camera number matching the port number in the GV video capture card.
2	Camera Name	Indicates the given camera name.
3	Date/Time	Displays the current date and time.
4	Storage Space	Indicates the remaining disk space.
5	Connection	Indicates the connection status of remote applications.
6	PTZ Control	Displays the PTZ control panel.
7	I/O Control	Displays the I/O control panel.
8	TV-Out	Displays the TV Quad control panel.
9	User-Defined	Accesses other applications.
10	Location Name	Indicates the GV-System's name, usually named by its geographical location.
11	Network	Enables the connection to remote applications.
12	Camera Scan	Rotates through the screen divisions.
13	ViewLog	Brings up these options: Video/Audio Log, System Log, Search POS Data, POS Live View, Live Object Index, Search Object Index and E-Map.
14	Configure	Accesses System settings.
15	Schedule	Sets up recording schedule.
16	Monitor	Starts monitoring.
17	Camera Select	Selects the desired camera number for main division view.
18	Screen Division	Selects screen divisions.
19	Exit	Brings up these options: Login/Change User, Logout, Minimize, Restart Multicam and Exit.

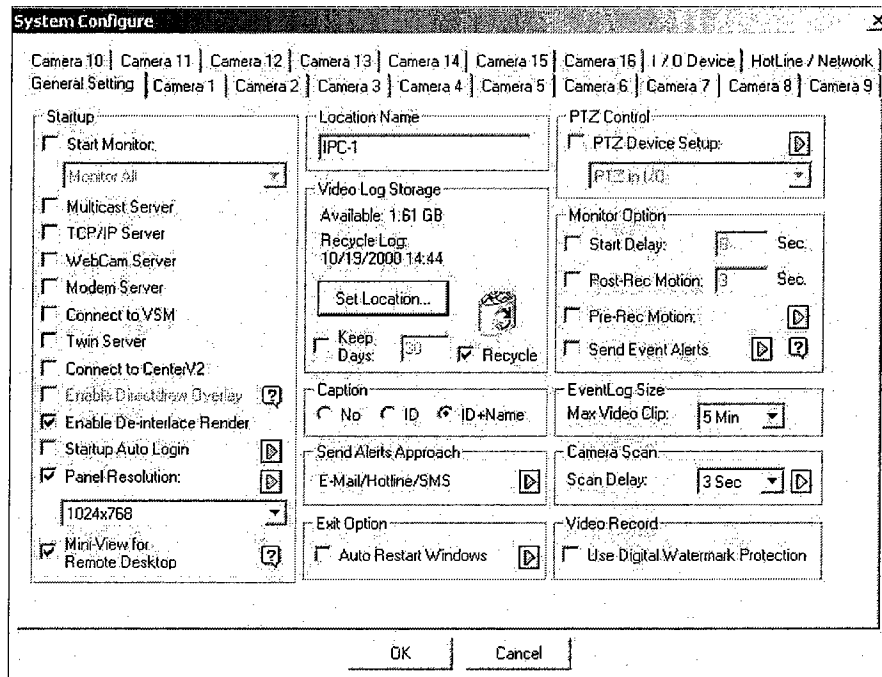


Figure 1-3

Configuring Global Recording Parameters

Let's start with the options in the General Setting tab:

[Startup] The Startup options instruct the system to enable selected features at Main System startup.

- **Start Monitor:** Select one of the following monitor control modes at startup:
 - Monitor All:** Allows you to monitor all cameras and I/O (if available) at startup. It is the same as to manually click Monitor button and select Start All Monitoring. (For details, see *Start/Stop Monitoring* later in this chapter).
 - Schedule Monitor:** Allows you to monitor cameras by schedule. Alternatively you may click Schedule button, Schedule Start. Refer to *Recording Schedule* later in this chapter.
 - I/O Monitor:** Allows you to monitor all I/O devices. Alternatively you may click the Monitor button, and then select I/O Monitoring.

Note: By adjusting Monitor Control, you may record or invoke alert methods of each camera with individual settings. See *Adjusting Individual Camera* later in this chapter to set up your Monitor Control.

- **Multicast Server:** Allows connection to IP Multicast (one of the remote application) at startup. (Or click the Network button and select Multicast Server.)

- Start Video Log from the GV-folder (Windows Start menu/Programs)
- In the Main System, click the **ViewLog** button and then select **Video/Audio Log**. Or press **[F10]** on the keyboard.

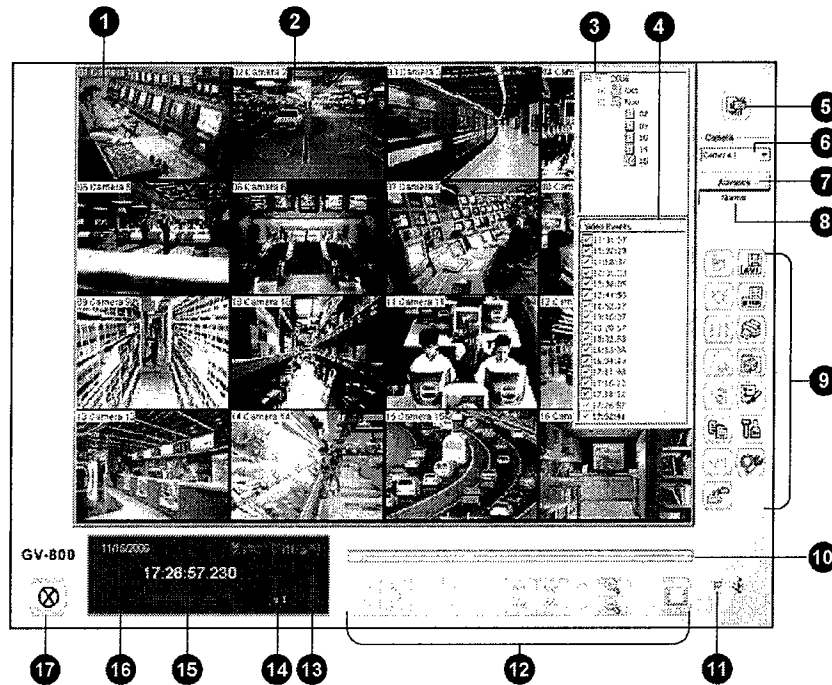


Figure 4-1 The ViewLog Window

By default when you open ViewLog, it will play the last event of camera number 1. Without further settings you could already play back the event by clicking the **Play** button (No. 12, Figure 4-1) on Playback Panel. Click the **View Mode** button (No. 5, Figure 4-1) to switch the current view mode to a multi-channel view. Use controls on Playback Panel to view the event in the way you want. Move the slider in Playback Meter (No. 10, Figure 4-1) forward and backward to navigate video frames.

To play back multiple events, keep pressing **[CTRL]** on the keyboard and highlight the desired events on the Video Event List (No. 4, Figure 4-1). Then click the **Play** button to play these events. To select events from different dates, click the date from the Date Tree (No. 3, Figure 4-1). Events of that date will be listed in the Video Event List.

The controls in the ViewLog window:

No.	Name	Description
1	Camera Name	Indicates the given camera name.
2	Camera View	Displays the playback video.
3	Date Tree	Displays date folders.
4	Video Event List	Displays video events within a certain date folder.
5	View Mode	Sets screen divisions: Single, Thumbnail, Quad or Multi View.
6	Camera Select	Sets a desired camera for display.
7	Advance	Accesses the basic or advanced search; see <i>Searching a Video Event</i> , later in this chapter. And reloads video event list.
8	Event List	Displays the date tree and video event list.
9	Function Panel	Provides various settings for ViewLog.
10	Scroll Bar	Scrolls forward or backward of the playback video.
11	Voice	Enables audio playback.
12	Playback Panel	Contains typical playback control buttons.
13	Function Icons	A highlighted icon indicates an enabled function. From left to right are the A to B Mode, auto playing of next events, the contrast and brightness function, the light enhancement and equalization function, the sharpness and smoothness function, the grayscale function, and reconnection to Remote ViewLog.
14	Playback Speed	Indicates the playback speed. x1 represents normal playback speed.
15	Time Display	Indicates the time of the playback video.
16	Date Display	Indicates the date of the playback video.
17	Exit	Closes or minimizes the ViewLog window.

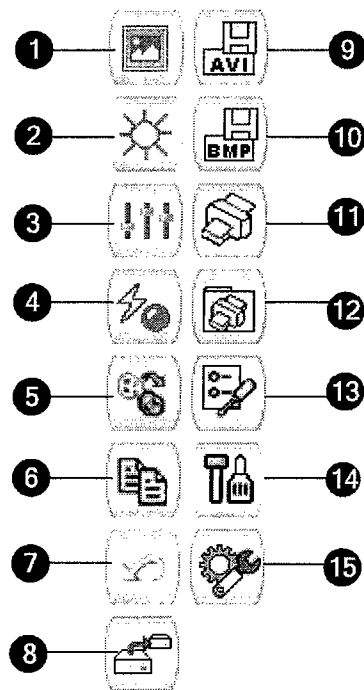


Figure 4-2 Function Panel

[Default Video Player]

- **Monitor Table:** Specify the playback software for playing back monitor events. For the details of each playback application, see Chapter 4.
- **POS Table:** Specify the playback software for playing back POS events.

[Import Previous Days of Live Log Browser] Specify how many days of data to be loaded to the System Log.

- **Set Location:** Click the Set Location button to specify a storage path. The available free space will be displayed in left hand side.
- **Keep Days:** Set the number of days to keep log files.
- **Recycle:** Enable the system to delete old log files to make space for new files when HDD free space is below 500MB.

To view and learn more about System Log, see *System Log* later in this chapter.

Popping Up a Camera Window on Motion Detection

Using this feature, you may view the pop-up camera at the moment when event occurs. To set up, click the **Configure** button, and then select **Camera Popup Setting**. This brings up the following Camera Popup Setting dialog box.

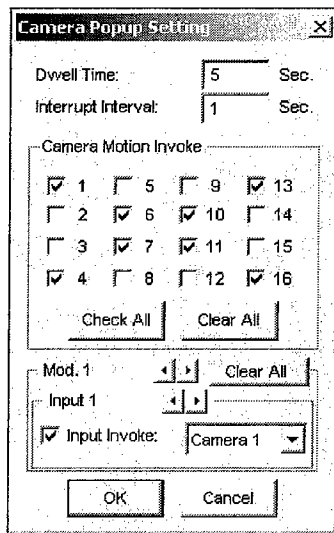


Figure 1-25

- **Dwell Time:** Specify the amount of time a pop-up camera window to remain in the foreground.
- **Interrupt Interval:** This feature is useful when more than one camera is set for pop-up notification. If cameras are all activated at the same time, specify the interrupt interval here would allow you to set the amount of time between camera pop-ups.

Face Detection

The Face Detection enables the GV-System to identify and record human faces. This feature captures human faces only, ignoring other body parts, objects or background views. Moreover, it can capture each face separately when a group of people comes in the view together.

1. On the main screen, click the **Configure** button, and select **Object Index/Monitor Setup**. The Camera Applied Object Index/Monitor dialog box appears.
2. Select the desired cameras for setup, and then click the **Configure** tab. The Video Object Setup dialog box (Figure 1-57) appears.
3. In the Object Index tab, select the desired camera from the drop-down list and enable **Camera** for setup.
4. In the Setup section, check **Face Detection**, and click **OK** to save the configurations.
5. Start the monitoring of configured camera(s).
6. On the main screen, click the **ViewLog** button and select **Live Object Index**.

When the faces are detected, the thumbnail images will appear on the Object Index Live Viewer.

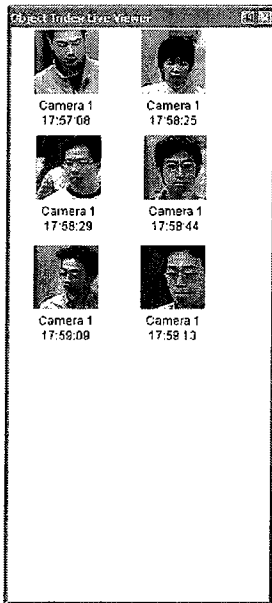


Figure 1-61

6. Double-clicking one of images can play back its related video.

For details on the settings in the Video Object Setup dialog box, see *Object Index Setup* earlier in this chapter.

2. Select the desired camera from the Device drop-down list, and check **PTZ Inactivity**.
3. Set the idle time after which to start the protection mode.
4. Select **Auto**, **Preset** or **Multi Position Tour** as protection mode.

Setting Multi Position Tour

You can create a PTZ tour with up to 16 preset points

1. Select **Multi Position Tour** on the Camera Mapping Setup dialog box (see Figure 1-29), and click the **Setting** button. This dialog box appears.

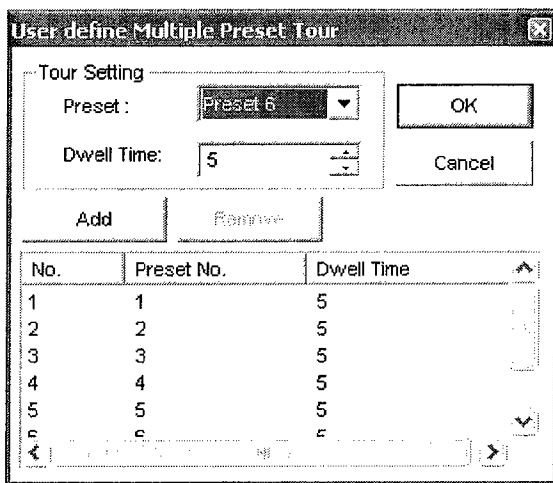
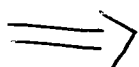


Figure 1-30

2. Select a Preset as a start point.
3. Set the Dwell Time that the PTZ will remain in a preset.
4. Click **Add** and repeat Steps 2-3 to build more points in the tour.



Setting Up Password

The password setup allows you to assign permission and rights to users. You can create up to **1,000** passwords. The system will control and restrict access to system resources based on the permission and rights associated with each user account. Only Supervisor account level is pre-set with the access to the Password Setup function. Click the **Configure** button, point to **Password Setup** and select **Local Account Edit** to display the following window.

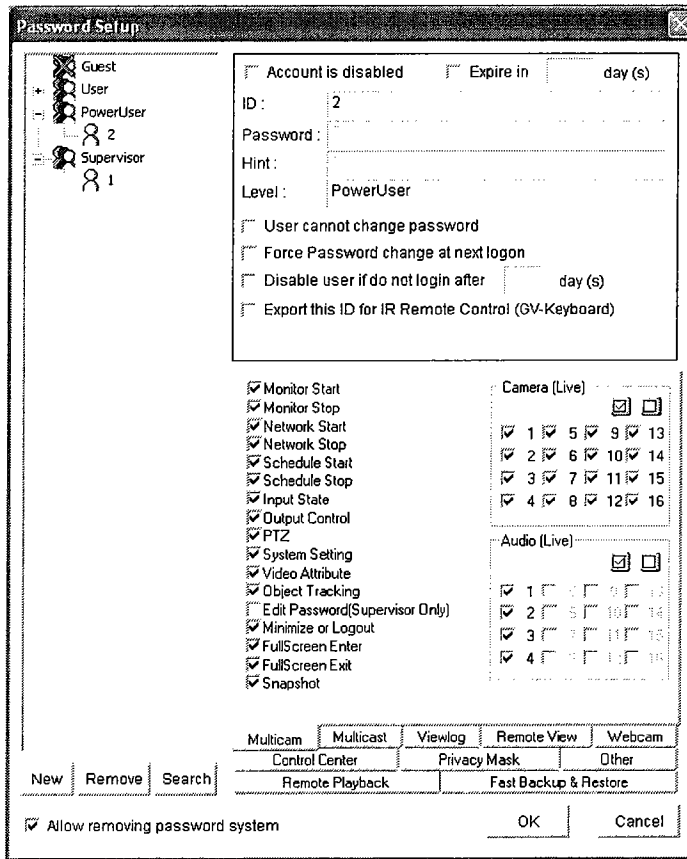


Figure 1-31

Adding a new user:

1. Click the **New** button at the lower-left hand corner to bring up the New Account dialog box.

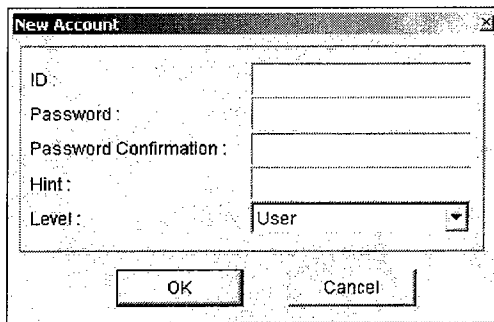


Figure 1-32

2. Enter the user's ID name and **password**. Re-enter the same password in the Password Confirmation field.
3. Give a **Hint** (optional) that would remind you of the password.

4. Select the user's authorization level: **Supervisor**, **PowerUser**, **User** or **Guest**. By default, users belonging to the Supervisor level have full rights over GV-System settings. PowerUsers have the same permission and rights as Supervisors, except that they cannot edit user information and delete the password system (described later). Users belonging to the User level are restricted to all system settings, and have only limited access to certain functions. Users in the Guest level can only view videos.
5. Click **OK** to add the user.

Editing an existing user: (Only supervisors are allowed to do it.)

1. Select a user from the user list to display its properties. Or, right click on any of the user levels (User, PowerUser, Supervisor), and then select **Find Specific Account** for quick search. A valid password is required to edit a supervisor.
2. Edit the properties as required. Check the **Account Is Disabled** item if you wish to disable this user.

These options you may also find in this dialog box:

- **Expire in xx day(s):** The account will expire and be disabled automatically after a set number of days. The number you set will count down automatically. Specify the number between 1 and 9999.
- **User cannot change password:** The user is not allowed to change the set password.
- **Force Password change at the first logon:** The user must change the password when logging in first time.
- **Disable user if do not login after xx day (s):** When the user does not log in the system after a set number of days, its account will be disabled automatically.
- **Export this ID for Remote Control:** This option allows the export of users IDs for the remote control. When it is checked, you can see the designated ID in the drop-down menu of login. (Note: For the operation of remote control, the password should be restricted for digits.)
- **Allow removing password System:** This option lets users remove the ID and password database from GV-System. To do this, select this option (only Supervisor level users can make the selection), and then find **PassUnInStall** in the system folder. Click the application, and a message prompts to you for confirmation. Click **Yes** to remove the entire ID and password from GV-System.

Note: If the **Allow Removing Password System** option is not checked, the loss of passwords will require the reinstallation of Windows and the reset of passwords.